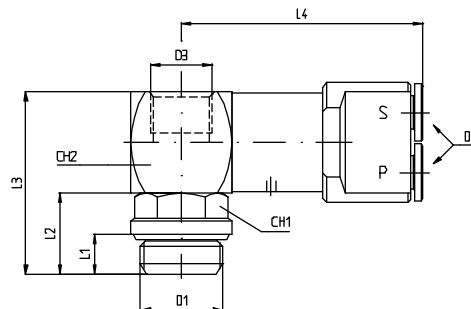


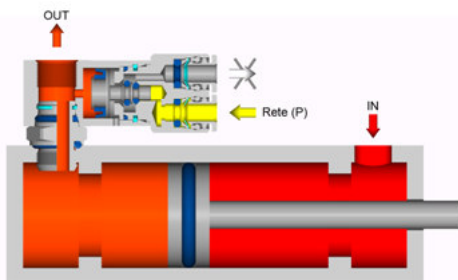
# MV 52

CZUJNIK PROGOWY

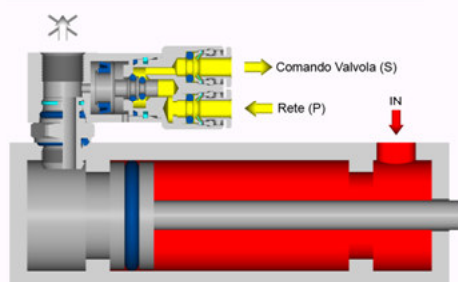


Cisnienie pracy (bar)	Cisnienie sterujące (bar)
3	0,3
4	0,5
5	0,65
6	0,9
7	1
8	1,2
9	1,4
10	1,6

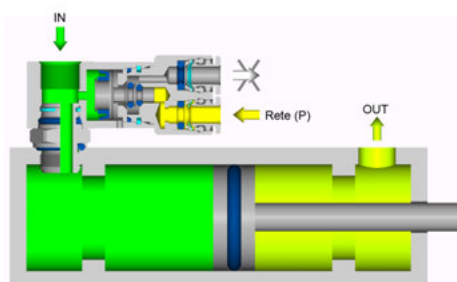
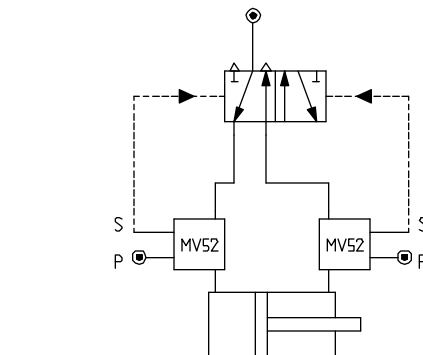
- Cisnienie pracy: 3 ÷ 10 bar
- Material:
  - Obudowa: Mosiadz niklowany UNI EN 12164 CW614;
  - O-Ring: NBR i PU



Rys. 1



Rys. 2



Rys. 3

Typ	D1	D2	D3	L1	L2	L3	L4	CH1	CH2	gr.
MV520018	1/8	4	1/8	5	11	29,5	38	13	16	63
MV520014	1/4	4	1/4	6,5	13	33	40	16	16	67
MV520038	3/8	4	3/8	7	13	33	42	20	20	

C.matic s.r.l – Via G.Donizetti, 76 – 20048 Carate Brianza (MI) – Tel 0362 805246 – Fax 0362 805262  
[www.cmatic.it](http://www.cmatic.it) - e-mail: [cmatic@cmatic.it](mailto:cmatic@cmatic.it)

La società C.matic s.r.l. si riserva la facoltà di apportare in qualsiasi momento tutte le modifiche che ritiene indispensabili al fine di migliorare la sua produzione.