



Technical Catalog

NPT.01



THE PN LINE

The PN is our “Automatic push-in fitting line” with NPT threads and INCH tube diameters. This line enables several quick connections and disconnections with calibrated plastic hoses at any time, at any stage of the pneumatic circuit and by simple hand movement.

The connection and the fitting tightness are made possible by the presence of a stainless steel gripper and an O-ring inside of the fitting so that once the tube is inserted to the bottom of the fitting, the stainless steel collet grips onto it and prevents it from being released. The tube disconnection is then made possible by pushing onto the outer metal ring called the release ring.

All PN fittings are brass nickel-plated.

DATA SHEET

Recommended Tubings: Rilsan PA 11, Nylon 6, Polyurethane (95 durometer or above).

Acceptable Tubing Tolerances:

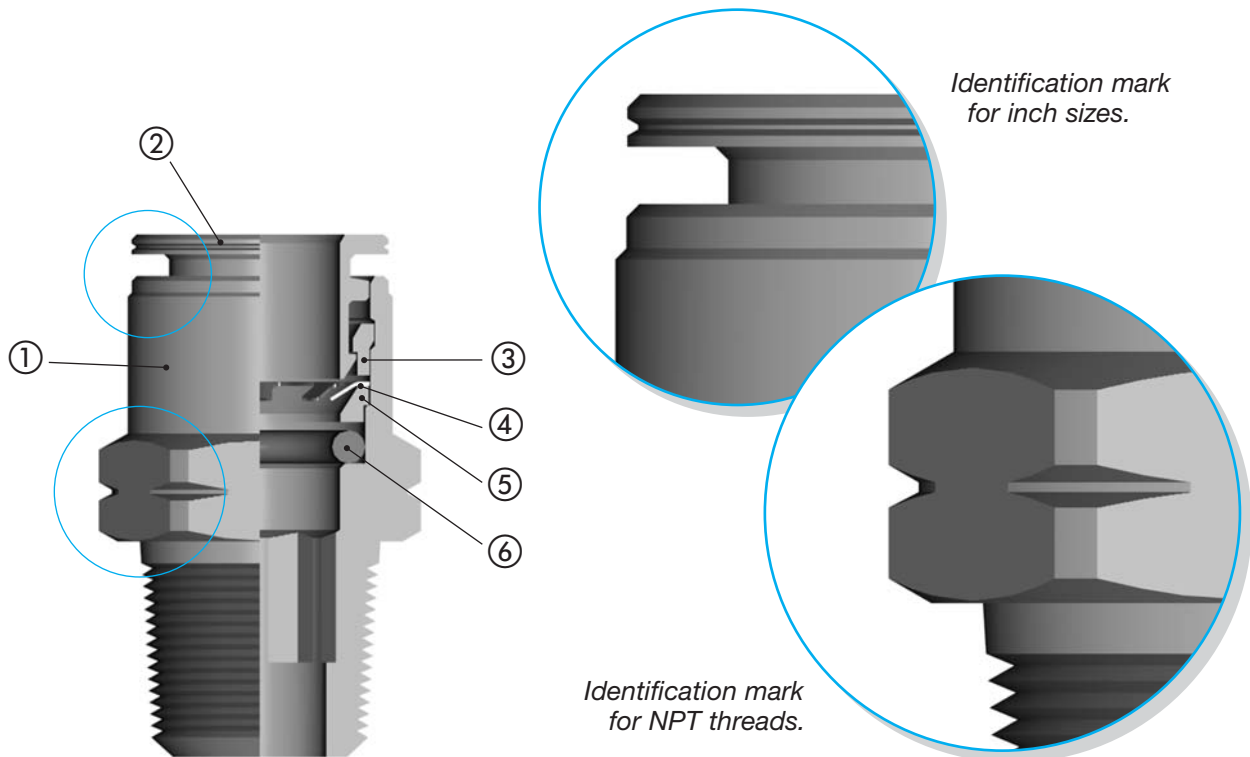
O.D. TUBE	O.D. TUBE TOLERANCES
1/8 to 3/16	+ .002 (+ 0.05 mm) - .003 (- 0.07 mm)
1/4 to 1/2	+ .002 (+ 0.05 mm) - .004 (- 0.01 mm)

Application fields: Pneumatic circuits.

Pressure Range: Depending on tubings used and always within: 0 P.S.I. ÷ 217 P.S.I.

Vacuum Application: up to 750 mmHg.

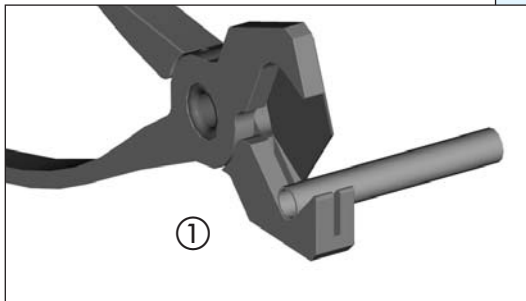
Working temperature: -4 °F ÷ 160 °F.



- ① **BODY:** Brass UNI EN 12164-5 Nickel-plated
- ② **RELEASE RING:** Brass UNI EN 12164-5 Nickel-plated
- ③ **TIGHTNESS RING:** Acetal Resin

- ④ **GRIPPING COLLET:** Stainless steel
- ⑤ **PROTECTION RING:** Acetal Resin
- ⑥ **O-RING:** NBR

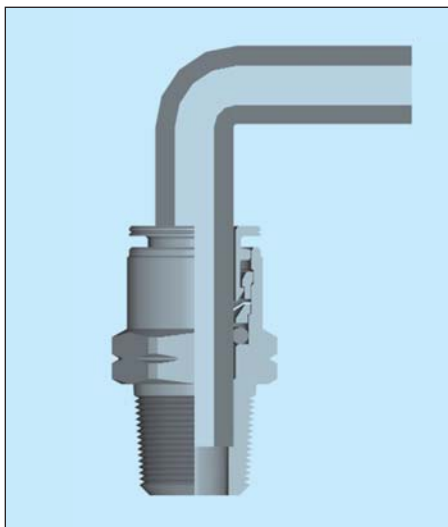
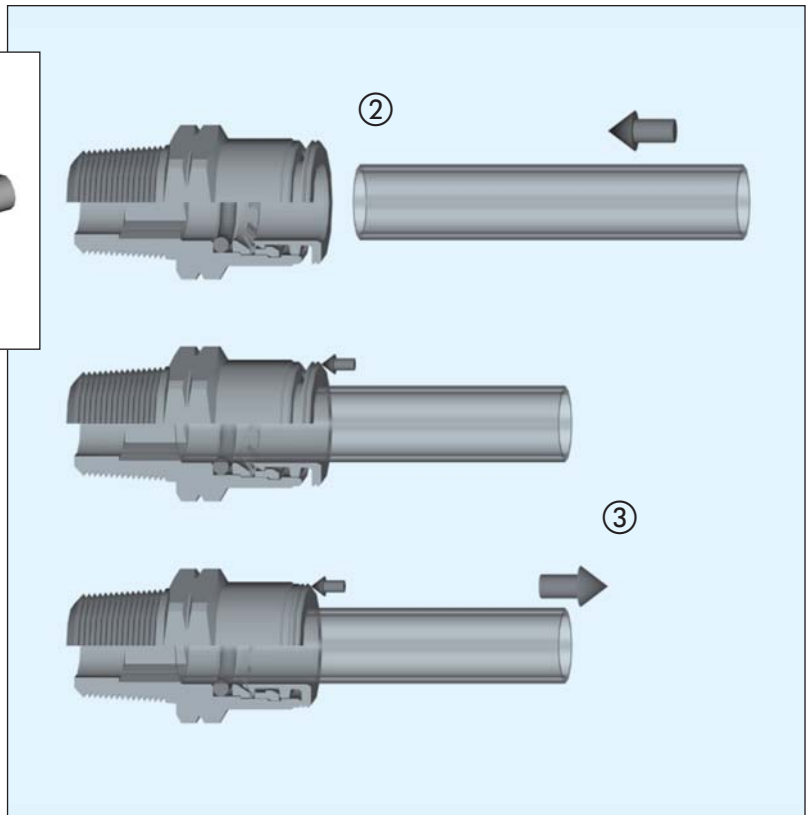
ASSEMBLY INSTRUCTIONS



1. Cut the tube square (by means of a tube cutter i.e. our RA 034) making sure that no burrs are left and that the tube is not oval.
2. Insert the tube into the fitting until it bottoms.

Tube release

3. While pressing on the release ring, pull out the tube from the fitting.

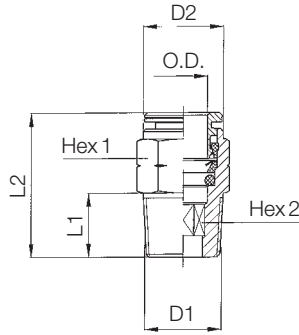


Our tapered male straight connector is provided with an inner hex allowing for easy assembly when no space is available.

NOTE

PN 11

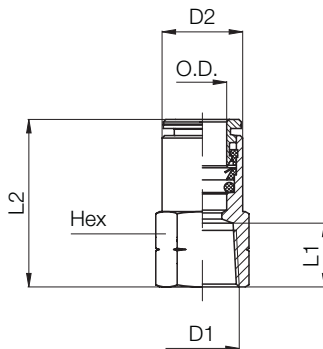
Male connector



Type	Tube OD	D1 UNF	D2	L1	L2	Hex	Hex2	oz
11 1/8 10-32	1/8	10-32	.275 (7)	.196 (5)	.649 (16.5)	5/16 (7.93)	3/32 (2.38)	
11 5/32 10-32	5/32	10-32	.354 (9)	.196 (5)	.767 (19.5)	3/8 (9.52)	3/32 (2.38)	
11 1/4 10-32	1/4	10-32	.472 (12)	.196 (5)	.905 (23)	1/2 (12.7)	3/32 (2.38)	
D1 NPTF								
11 1/8 1/8	1/8	1/8	.275 (7)	.334 (8.5)	.728 (18.5)	7/16 (11.1)	3/32 (2.38)	
11 5/32 1/8	5/32	1/8	.354 (9)	.334 (8.5)	.748 (19)	7/16 (11.1)	1/8 (3.17)	
11 5/32 1/4	5/32	1/4	.354 (9)	.511 (13)	.925 (23.5)	9/16 (14.28)	1/8 (3.17)	
11 1/4 1/8	1/4	1/8	.472 (12)	.334 (8.5)	.846 (21.5)	1/2 (12.7)	5/32 (4)	
11 1/4 1/4	1/4	1/4	.472 (12)	.511 (13)	.944 (24)	9/16 (14.28)	5/32 (4)	
11 5/16 1/8	5/16	1/8	.551 (14)	.334 (8.5)	1.023 (26)	9/16 (14.28)	1/4 (6.35)	
11 5/16 1/4	5/16	1/4	.551 (14)	.511 (13)	.984 (25)	9/16 (14.28)	1/4 (6.35)	
11 5/16 3/8	5/16	3/8	.551 (14)	.511 (13)	.964 (24.5)	11/16 (17.46)	1/4 (6.35)	
11 3/8 1/8	3/8	1/8	.629 (16)	.334 (8.5)	1.082 (27.5)	11/16 (17.46)	1/4 (6.35)	
11 3/8 1/4	3/8	1/4	.629 (16)	.511 (13)	1.220 (31)	11/16 (17.46)	1/4 (6.35)	
11 3/8 3/8	3/8	3/8	.629 (16)	.511 (13)	.964 (24.5)	11/16 (17.46)	5/16 (8)	
11 1/2 1/4	1/2	1/4	.748 (19)	.511 (13)	1.299 (33)	13/16 (20.63)	5/16 (8)	
11 1/2 3/8	1/2	3/8	.748 (19)	.511 (13)	1.122 (28.5)	13/16 (20.63)	13/32 (10.31)	
11 1/2 1/2	1/2	1/2	.748 (19)	.669 (17)	1.161 (29.5)	7/8 (22.22)	13/32 (10.31)	

PN 13

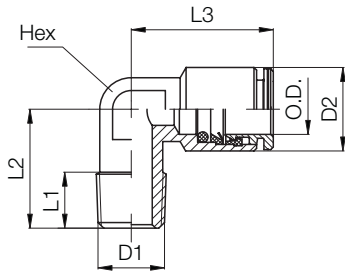
Female connector



Type	Tube OD	D1 NPTF	D2	L1	L2	Hex	oz
13 5/32 1/8	5/32	1/8	.354 (9)	.334 (8.5)	.964 (24.5)	9/16 (14.28)	
13 1/4 1/8	1/4	1/8	.472 (12)	.334 (8.5)	1.043 (26.5)	9/16 (14.28)	
13 1/4 1/4	1/4	1/4	.472 (12)	.511 (13)	1.220 (31)	11/16 (17.46)	
13 5/16 1/8	5/16	1/8	.551 (14)	.334 (8.5)	1.039 (26.4)	9/16 (14.28)	
13 5/16 1/4	5/16	1/4	.551 (14)	.511 (13)	1.220 (31)	11/16 (17.46)	
13 3/8 1/4	3/8	1/4	.629 (16)	.511 (13)	1.299 (33)	11/16 (17.46)	
13 3/8 3/8	3/8	3/8	.629 (16)	.511 (13)	1.299 (33)	13/16 (20.63)	

PN 14

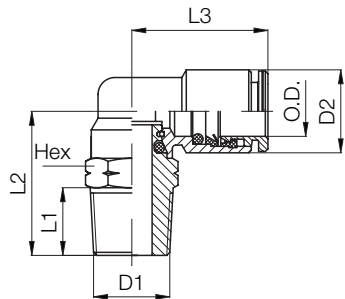
Male Elbow



Type	Tube OD	D1 NPTF	D2	L1	L2	L3	Hex	oz
14 5/32 1/8	5/32	1/8	.354 (9)	.334 (8.5)	.610 (15.5)	.669 (17)	.314 (8)	
14 1/4 1/8	1/4	1/8	.472 (12)	.334 (8.5)	.629 (16)	.787 (20)	.393 (10)	
14 1/4 1/4	1/4	1/4	.472 (12)	.433 (11)	.787 (20)	.787 (20)	.393 (10)	
14 5/16 1/8	5/16	1/8	.551 (14)	.334 (8.5)	.669 (17)	.846 (21.5)	.472 (12)	
14 5/16 1/4	5/16	1/4	.551 (14)	.433 (11)	.826 (21)	.846 (21.5)	.472 (12)	
14 3/8 1/4	3/8	1/4	.629 (16)	.433 (11)	.885 (22.5)	.944 (24)	.551 (14)	
14 3/8 3/8	3/8	3/8	.629 (16)	.433 (11)	.885 (22.5)	.944 (24)	.551 (14)	

PN 15

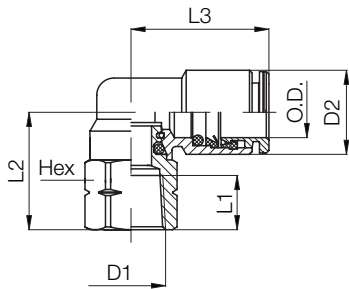
Swivel Female Elbow



Type	Tube OD	D1 UNF	D2	L1	L2	L3	Hex	oz
15 1/8 10-32	1/8	10-32	.275 (7)	.196 (5)	.649 (16.5)	.570 (14.5)	3/8 (9.52)	
15 5/32 10-32	5/32	10-32	.354 (9)	.196 (5)	.649 (16.5)	.669 (17)	3/8 (9.52)	
		D1 NPTF						
15 1/8 1/8	1/8	1/8	.275 (7)	.334 (8.5)	.728 (18.5)	.570 (14.5)	7/16 (11.11)	
15 5/32 1/8	5/32	1/8	.354 (9)	.334 (8.5)	.728 (18.5)	.669 (17)	7/16 (11.11)	
15 5/32 1/4	5/32	1/4	.354 (9)	.511 (13)	1.023 (26)	.748 (19)	9/16 (14.28)	
15 1/4 1/8	1/4	1/8	.472 (12)	.334 (8.5)	.826 (21)	.846 (21.5)	1/2 (12.7)	
15 1/4 1/4	1/4	1/4	.472 (12)	.511 (13)	1.023 (26)	.846 (21.5)	9/16 (14.28)	
15 5/16 1/8	5/16	1/8	.551 (14)	.334 (8.5)	.826 (21)	.866 (22)	1/2 (12.7)	
15 5/16 1/4	5/16	1/4	.551 (14)	.511 (13)	1.023 (26)	.866 (22)	9/16 (14.28)	
15 5/16 3/8	5/16	3/8	.551 (14)	.511 (13)	1.122 (28.5)	.885 (22.5)	11/16 (17.46)	
15 3/8 1/8	3/8	1/8	.629 (16)	.334 (8.5)	.944 (24)	.984 (25)	11/16 (17.46)	
15 3/8 1/4	3/8	1/4	.629 (16)	.511 (13)	1.122 (28.5)	.984 (25)	11/16 (17.46)	
15 3/8 3/8	3/8	3/8	.629 (16)	.511 (13)	1.122 (28.5)	.984 (25)	11/16 (17.46)	
15 1/2 1/4	1/2	1/4	.748 (19)	.511 (13)	1.259 (32)	1.082 (27.5)	13/16 (20.63)	
15 1/2 3/8	1/2	3/8	.748 (19)	.511 (13)	1.259 (32)	1.082 (27.5)	13/16 (20.63)	
15 1/2 1/2	1/2	1/2	.748 (19)	.669 (17)	1.437 (36.5)	1.082 (27.5)	7/8 (22.22)	

PN 17

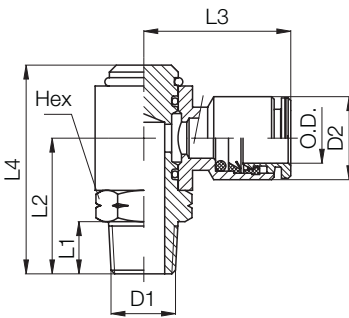
Swivel Female Elbow



Type	Tube OD	D ₁ NPTF	D ₂	L ₁	L ₂	L ₃	Hex	oz
17 5/32 1/8	1/8	1/8	.354 (9)	.334 (8.5)	.767 (19.5)	.748 (19)	9/16	(14.28)
17 1/4 1/8	1/4	1/8	.472 (12)	.334 (8.5)	.767 (19.5)	.846 (21.5)	9/16	(14.28)
17 1/4 1/4	1/4	1/4	.472 (12)	.511 (13)	.925 (23.5)	.846 (21.5)	11/16	(17.46)
17 5/16 1/8	5/16	1/8	.551 (14)	.334 (8.5)	.767 (19.5)	.866 (22)	9/16	(14.28)
17 5/16 1/4	5/16	1/4	.551 (14)	.511 (13)	.925 (23.5)	.866 (22)	11/16	(17.46)
17 3/8 1/4	3/8	1/4	.629 (16)	.511 (13)	1.003 (25.5)	.984 (25)	11/16	(17.46)
17 3/8 3/8	3/8	3/8	.629 (16)	.511 (13)	1.003 (25.5)	.984 (25)	13/16	(20.63)

PN 18

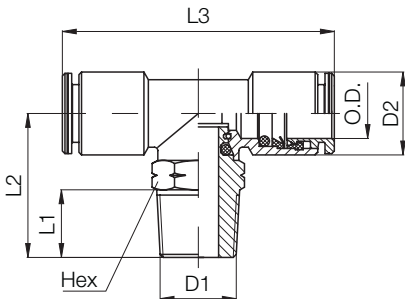
Swivel fitting with banjo ring



Type	Tube OD	D ₁ NPTF	D ₂	L ₁	L ₂	L ₃	L ₄	Hex	oz
18 5/32 1/8	5/32	1/8	.354 (9)	.334 (8.5)	.787 (20)	.787 (20)	1.200 (30.5)	9/16	(14.28)
18 1/4 1/8	1/4	1/8	.472 (12)	.334 (8.5)	.787 (20)	.885 (22.5)	1.200 (30.5)	9/16	(14.28)
18 1/4 1/4	1/4	1/4	.472 (12)	.511 (13)	1.023 (26)	.925 (23.5)	1.476 (37.5)	11/16	(17.46)
18 5/16 1/8	5/16	1/8	.551 (14)	.334 (8.5)	.787 (20)	.885 (22.5)	1.200 (30.5)	9/16	(14.28)
18 5/16 1/4	5/16	1/4	.551 (14)	.511 (13)	1.023 (26)	.944 (24)	1.476 (37.5)	11/16	(17.46)
18 5/16 3/8	5/16	3/8	.551 (14)	.511 (13)	1.102 (28)	1.023 (26)	1.614 (41)	13/16	(20.63)
18 3/8 1/4	3/8	1/4	.629 (16)	.511 (13)	1.023 (26)	1.023 (26)	1.476 (37.5)	11/16	(17.46)
18 3/8 3/8	3/8	3/8	.629 (16)	.511 (13)	1.102 (28)	1.102 (28)	1.614 (41)	13/16	(20.63)

PN 20

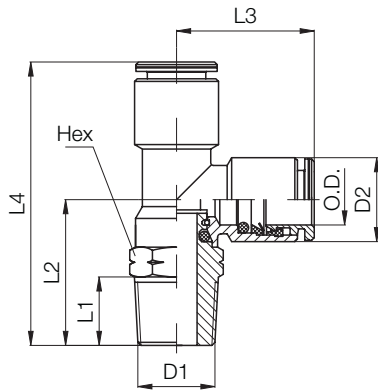
Swivel Tee



Type	Tube OD	D ₁ NPTF	D ₂	L ₁	L ₂	L ₃	Hex	oz
20 1/8 1/8	1/8"	1/8	.275 (7)	.334 (8.5)	.728 (18.5)	1.141 (29)	7/16	(11.11)
20 5/32 1/8	5/32"	1/8	.354 (9)	.334 (8.5)	.826 (21)	1.496 (38)	1/2	(12.7)
20 5/32 1/4	5/32"	1/4	.354 (9)	.511 (13)	1.023 (26)	1.496 (38)	9/16	(14.28)
20 1/4 1/8	1/4"	1/8	.472 (12)	.334 (8.5)	.826 (21)	1.692 (43)	1/2	(12.7)
20 1/4 1/4	1/4"	1/4	.472 (12)	.511 (13)	1.023 (26)	1.692 (43)	9/16	(14.28)
20 5/16 1/8	5/16"	1/8	.551 (14)	.334 (8.5)	.826 (21)	1.732 (44)	1/2	(12.7)
20 5/16 1/4	5/16"	1/4	.551 (14)	.511 (13)	1.023 (26)	1.732 (44)	9/16	(14.28)
20 3/8 1/4	3/8"	1/4	.629 (16)	.511 (13)	1.122 (28.5)	1.968 (50)	11/16	(17.46)
20 3/8 3/8	3/8"	3/8	.629 (16)	.511 (13)	1.122 (28.5)	1.968 (50)	11/16	(17.46)
20 1/2 3/8	1/2"	3/8	.748 (19)	.511 (13)	1.259 (32)	2.165 (55)	13/16	(20.63)
20 1/2 1/2	1/2"	1/2	.748 (19)	.669 (17)	1.437 (36.5)	2.165 (55)	7/8	(22.22)

PN 23

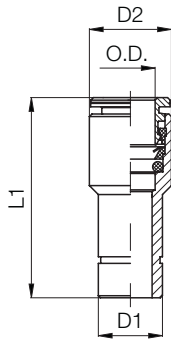
Swivel Male Run Tee



Type	Tube OD	D1 NPTF	D2	L1	L2	L3	L4	Hex	oz
23 5/32 1/8	5/32	1/8	.354 (9)	.334 (8.5)	.826 (21)	.748 (19)	1.574 (40)	1/2	(12.7)
23 5/32 1/4	5/32	1/4	.354 (9)	.511 (13)	1.023 (26)	.748 (19)	1.771 (45)	9/16	(14.28)
23 1/4 1/8	1/4	1/8	.472 (12)	.334 (8.5)	.826 (21)	.846 (21.5)	1.673 (42.5)	1/2	(12.7)
23 1/4 1/4	1/4	1/4	.472 (12)	.511 (13)	1.023 (26)	.846 (21.5)	1.870 (47.5)	9/16	(14.28)
23 5/16 1/8	5/16	1/8	.551 (14)	.334 (8.5)	.826 (21)	.866 (22)	1.692 (43)	1/2	(12.7)
23 5/16 1/4	5/16	1/4	.551 (14)	.511 (13)	1.023 (26)	.866 (22)	1.889 (48)	9/16	(14.28)
23 3/8 1/4	3/8	1/4	.629 (16)	.511 (13)	1.122 (28.5)	.984 (25)	2.106 (53.5)	11/16	(17.46)
23 3/8 3/8	3/8	3/8	.629 (16)	.511 (13)	1.122 (28.5)	.984 (25)	2.106 (53.5)	11/16	(17.46)
23 1/2 3/8	1/2	3/8	.748 (19)	.511 (13)	1.259 (32)	1.082 (27.5)	2.342 (59.5)	13/16	(20.63)
23 1/2 1/2	1/2	1/2	.748 (19)	.669 (17)	1.437 (36.5)	1.082 (27.5)	2.519 (64)	7/8	(22.22)

PN 25

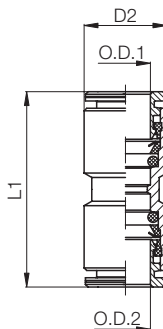
Reducer



Type	Tube OD	D1	D2	L1	oz
25 1/8 5/32	1/8	5/32	.275 (7)	1.141 (29)	
25 5/32 1/4	5/32	1/4	.354 (9)	1.220 (31)	
25 1/4 5/16	1/4	5/16	.472 (12)	1.299 (33)	
25 1/4 3/8	1/4	3/8	.472 (12)	1.377 (35)	
25 1/4 1/2	1/4	1/2	.472 (12)	1.377 (35)	
25 5/16 3/8	5/16	3/8	.551 (14)	1.377 (35)	
25 3/8 1/2	3/8	1/2	.629 (16)	1.417 (36)	

PN 26

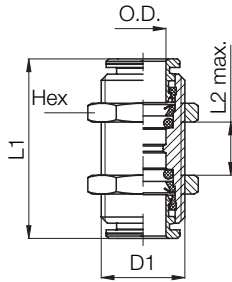
Union



Type	Tube OD 1	Tube OD 2	D2	L1	oz
26 1/8 1/8	1/8	1/8	.275 (7)	.866 (22)	
26 5/32 5/32	5/32	5/32	.354 (9)	1.062 (27)	
26 1/4 1/4	1/4	1/4	.472 (12)	1.299 (33)	
26 5/16 5/16	5/16	5/16	.551 (14)	1.299 (33)	
26 3/8 3/8	3/8	3/8	.629 (16)	1.456 (37)	
26 1/2 1/2	1/2	1/2	.748 (19)	1.535 (39)	

PN 27

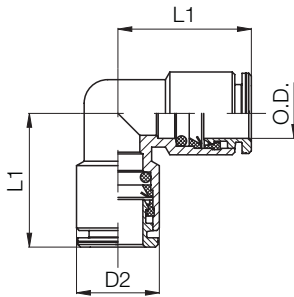
Bulkhead union



Type	Tube OD	D ₁	L ₁	L ₂	Hex	⚖ oz
27 1/8 1/8	1/8	M10x1	.866 (22)	.314 (8)	.551 (14)	
27 5/32 5/32	5/32	M12x1	1.062 (27)	.433 (11)	.629 (16)	
27 1/4 1/4	1/4	M14x1	1.299 (33)	.629 (16)	.708 (18)	
27 5/16 5/16	5/16	M16x1	1.299 (33)	.669 (17)	.787 (20)	
27 3/8 3/8	3/8	M18x1	1.456 (37)	.748 (19)	.866 (22)	
27 1/2 1/2	1/2	M20x1	1.535 (39)	.787 (20)	.944 (24)	

PN 28

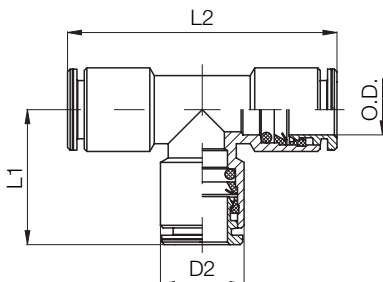
Union Elbow



Type	Tube OD	D ₂	L ₁	⚖ oz
28 1/8 1/8	1/8	.275 (7)	.590 (15)	
28 5/32 5/32	5/32	.354 (9)	.669 (17)	
28 1/4 1/4	1/4	.472 (12)	.787 (20)	
28 5/16 5/16	5/16	.551 (14)	.846 (21.5)	
28 3/8 3/8	3/8	.629 (16)	.964 (24.5)	
28 1/2 1/2	1/2	.748 (19)	1.0 (25.5)	

PN 29

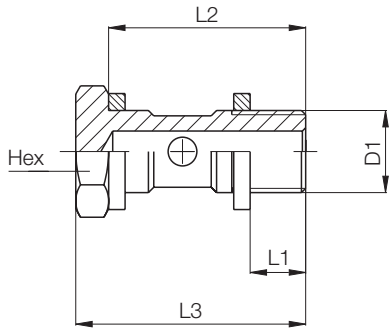
Union Tee



Type	Tube OD	D ₂	L ₁	L ₂	⚖ oz
29 1/8 1/8	1/8	.275 (7)	.590 (15)	1.181 (30)	
29 5/32 5/32	5/32	.354 (9)	.669 (17)	1.338 (34)	
29 1/4 1/4	1/4	.472 (12)	.787 (20)	1.574 (40)	
29 5/16 5/16	5/16	.551 (14)	.846 (21.5)	1.692 (43)	
29 3/8 3/8	3/8	.629 (16)	.964 (24.5)	1.929 (49)	
29 1/2 1/2	1/2	.748 (19)	1.0 (25.5)	2.00 (51)	

PN 31

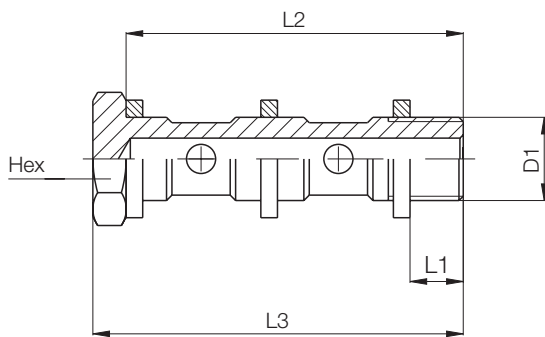
Simple Screw



Type	D1 GAS CIL.	L1	L2	L3	Hex	oz
31 00 18	1/8	.196 (5)	.905 (23)	1.062 (27)	.551 (14)	
31 00 14	1/4	.255 (6.5)	1.043 (26.5)	1.240 (31.5)	.669 (17)	
31 00 38	3/8	.275 (7)	1.181 (30)	1.417 (36)	.787 (20)	

PN 32

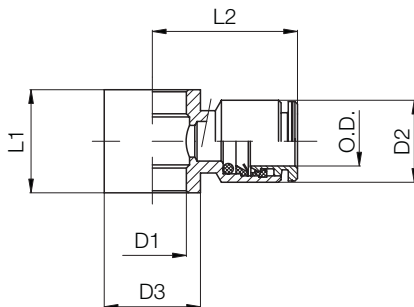
Double Screw



Type	D1 GAS CIL.	L1	L2	L3	Hex	oz
32 00 18	1/8	.196 (5)	1.555 (39,5)	1.673 (42,5)	.551 (14)	
32 00 14	1/4	.255 (6.5)	1.771 (45)	1.968 (50)	.669 (17)	
32 00 38	3/8	.275 (7)	2.027 (51.5)	2.263 (57.5)	.787 (20)	

PN 35

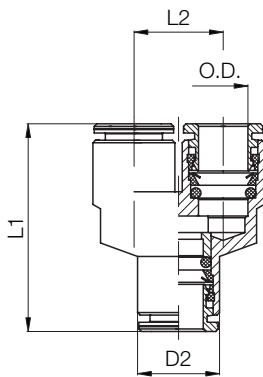
Banjo Ring



Type	Tube OD	D1	D2	D3	L1	L2	oz
35 5/32 1/8	5/32	.393 (10)	.354 (9)	.551 (14)	.590 (15)	.787 (20)	
35 1/4 1/8	1/4	.393 (10)	.472 (12)	.551 (14)	.590 (15)	.885 (22.5)	
35 1/4 1/4	1/4	.519 (13.2)	.472 (12)	.669 (17)	.669 (17)	.925 (23.5)	
35 5/16 1/8	5/16	.393 (10)	.551 (14)	.551 (14)	.590 (15)	.885 (22.5)	
35 5/16 1/4	5/16	.519 (13.2)	.551 (14)	.669 (17)	.669 (17)	.944 (24)	
35 5/16 3/8	5/16	.669 (17)	.551 (14)	.826 (21)	.787 (20)	1.023 (26)	
35 3/8 1/4	3/8	.519 (13.2)	.629 (16)	.669 (17)	.669 (17)	1.023 (26)	
35 3/8 3/8	3/8	.669 (17)	.629 (16)	.826 (21)	.787 (20)	1.102 (28)	

PN 37

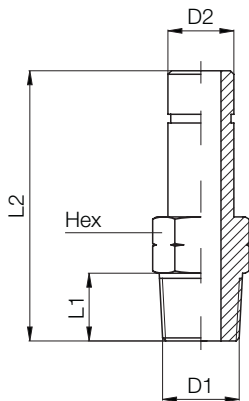
Union Y Connector



Type	Tube OD	D ₂	L ₁	L ₂	oz
37 1/8 1/8	1/8	.275 (7)	.866 (22)	.275 (7)	
37 5/32 5/32	5/32	.354 (9)	1.122 (28.5)	.374 (9.5)	
37 1/4 1/4	1/4	.472 (12)	1.377 (35)	.492 (12.5)	
37 5/16 5/16	5/16	.551 (14)	1.476 (37.5)	.570 (14.5)	

PN 38

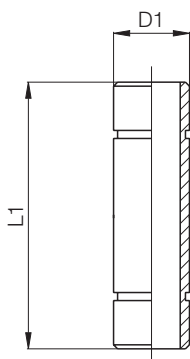
Stem adaptor



Type	D ₁ UNF	D ₂	L ₁	L ₂	Hex	oz
38 5/32 10-32	10-32	5/32	.196 (5)	.984 (25)	5/16 (7.93)	
D ₁ NPTF						
38 5/32 1/8	1/8	5/32	.334 (8.5)	1.122 (28.5)	7/16 (11.11)	
38 5/32 1/4	1/4	5/32	.511 (13)	1.318 (33.5)	9/16 (14.28)	
38 1/4 1/8	1/8	1/4	.334 (8.5)	1.200 (30.5)	7/16 (11.11)	
38 1/4 1/4	1/4	1/4	.511 (13)	1.397 (35.5)	9/16 (14.28)	
38 5/16 1/8	1/8	5/16	.334 (8.5)	1.279 (32.5)	7/16 (11.11)	
38 5/16 1/4	1/4	5/16	.511 (13)	1.476 (37.5)	9/16 (14.28)	
38 3/8 1/4	1/4	3/8	.511 (13)	1.555 (39.5)	9/16 (14.28)	
38 3/8 3/8	3/8	3/8	.511 (13)	1.574 (40)	11/16 (17.46)	
38 1/2 3/8	3/8	1/2	.511 (13)	1.692 (43)	11/16 (17.46)	
38 1/2 1/2	1/2	1/2	.669 (17)	1.889 (48)	7/8 (22.22)	

PN 39

Extention Piece



Type	D ₁	L ₁	oz
39 5/32 5/32	5/32	1.181 (30)	
39 1/4 1/4	1/4	1.377 (35)	
39 5/16 5/16	5/16	1.377 (35)	
39 3/8 3/8	3/8	1.574 (40)	
39 1/2 1/2	1/2	1.653 (42)	

THE PA LINE

The PA line, also known as the "Accessories line" or the "Standard fittings line" consists of a wide variety of components, such as Nipples, Reduction pieces, Connections, Plugs, L-T and Cross fittings.

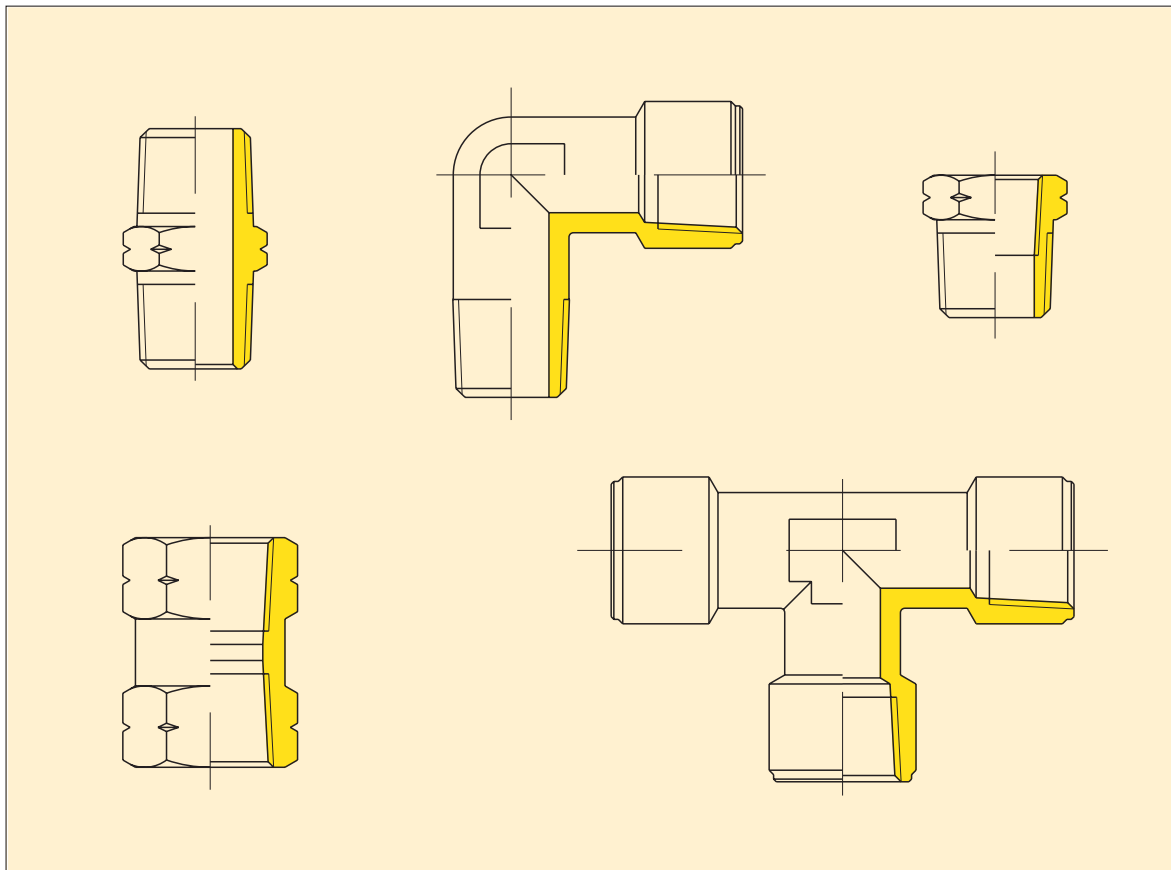
Due to the multiple auxiliary functions of this line, the PA fittings are the right complement for other ranges.

All components are brass nickel-plated.

DATA SHEET

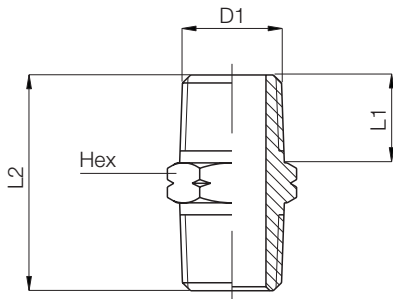
Max working pressure: 870 p.s.i.

Application field: Pneumatic, hydraulic, oleodynamic and hydropneumatic installations.



PA 012

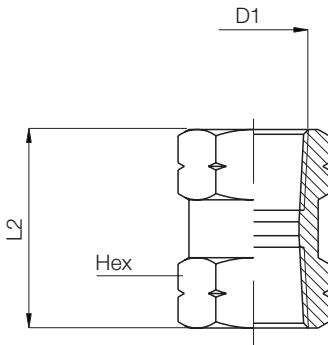
Nipple, taper



Type	D1 NPTF	L1	L2	Hex	oz
12 1/8 1/8	1/8	.334 (8,5)	.866 (22)	.472 (12)	
12 1/4 1/4	1/4	.511 (13)	1.220 (31)	.551 (14)	
12 3/8 3/8	3/8	.511 (13)	1.220 (31)	.708 (18)	
12 1/2 1/2	1/2	.669 (17)	1.574 (40)	.866 (22)	

PA 013

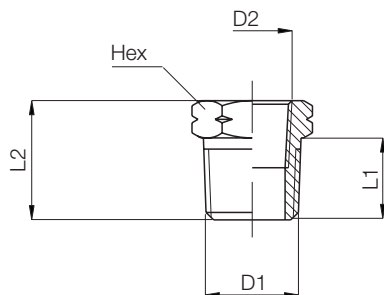
Joint piece



Type	D1 NPTF	L1	Hex	oz
13 1/8 1/8	1/8	.708 (18)	.551 (14)	
13 1/4 1/4	1/4	1.063 (27)	.669 (17)	
13 3/8 3/8	3/8	1.063 (27)	.866 (22)	
13 1/2 1/2	1/2	1.378 (35)	1.063 (27)	

PA 014

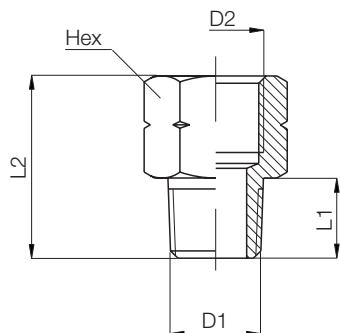
Taper female-male reducing connector



Type	D1 NPTF	D2 NPTF	L1	L2	Hex	oz
14 1/8 10-32	1/8	10-32 UNF	.334 (8,5)	.590 (15)	.472 (12)	
14 1/4 1/8	1/4	1/8	.511 (13)	.748 (19)	.551 (14)	
14 3/8 1/8	3/8	1/8	.511 (13)	.748 (19)	.708 (18)	
14 3/8 1/4	3/8	1/4	.511 (13)	.748 (19)	.708 (18)	
14 1/2 1/4	1/2	1/4	.669 (17)	.944 (24)	.866 (22)	
14 1/2 3/8	1/2	3/8	.669 (17)	.944 (24)	.866 (22)	

PA 016

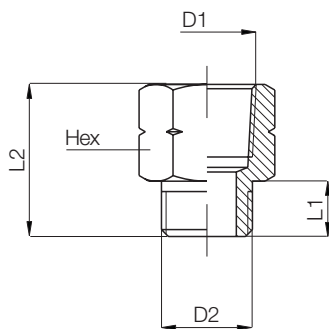
Adaptor male-female, taper



Type	D1 NPTF	D2 GAS CIL	L1	L2	Hex	oz
16 10-32 M5	10-32 UNF	M5	.196 (5)	.472 (12)	.315 (8)	
16 1/8 1/8	1/8	1/8	.334 (8,5)	.748 (19)	.708 (18)	
16 1/4 1/4	1/4	1/4	.511 (13)	1.063 (27)	.708 (18)	
16 3/8 3/8	3/8	3/8	.511 (13)	1.063 (27)	.866 (22)	
16 1/2 1/2	1/2	1/2	.669 (17)	1.338 (34)	1.063 (27)	

PA 017

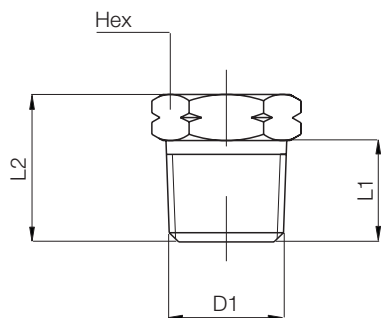
Adaptor male-female, parrallel



Type	D1 NPTF	D2 GAS CIL	L1	L2	Hex	oz
17 1/8 1/8	1/8	1/8	.236 (6)	.708 (18)	.551 (14)	
17 1/4 1/4	1/4	1/4	.315 (8)	.944 (24)	.669 (17)	
17 3/8 3/8	3/8	3/8	.354 (9)	.984 (25)	.822 (22)	
17 1/2 1/2	1/2	1/2	.393 (10)	1.181 (30)	.944 (24)	

PA 019

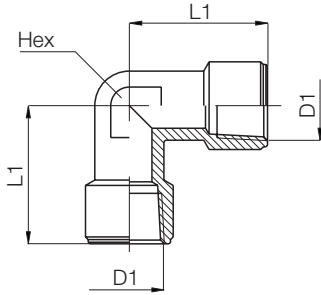
Male plug



Type	D1 NPTF	L1	L2	Hex	oz
19 00 1/8	1/8	.334 (8,5)	.492 (12,5)	.472 (12)	
19 00 1/4	1/4	.511 (13)	.708 (18)	.551 (14)	
19 00 3/8	3/8	.511 (13)	.708 (18)	.708 (18)	
19 00 1/2	1/2	.669 (17)	.905 (23)	.866 (22)	

PA 021

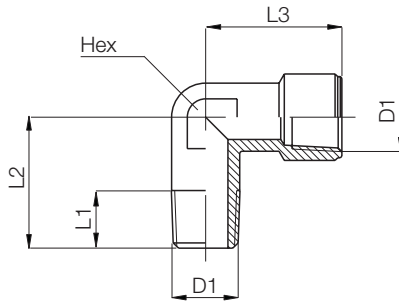
Female elbow



Type	D ₁ NPTF	L ₁	Hex	oz
21 1/8 1/8	1/8	.826 (21)	.472 (12)	
21 1/4 1/4	1/4	1.023 (26)	.511 (13)	
21 3/8 3/8	3/8	1.181 (30)	.669 (17)	
21 1/2 1/2	1/2	1.338 (34)	.826 (21)	

PA 022

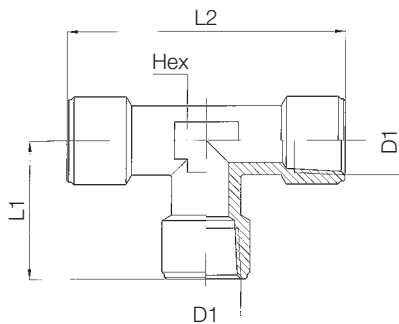
Male-female elbow



Type	D ₁ NPTF	L ₁	L ₂	L ₃	Hex	oz
22 1/8 1/8	1/8	.334 (8,5)	.748 (19)	.826 (21)	.472 (12)	
22 1/4 1/4	1/4	.511 (13)	.984 (25)	1.023 (26)	.511 (13)	
22 3/8 3/8	3/8	.511 (13)	1.102 (28)	1.181 (30)	.669 (17)	
22 1/2 1/2	1/2	.669 (17)	1.181 (30)	1.338 (34)	.826 (21)	

PA 023

Female tee



Type	D ₁ NPTF	L ₁	L ₂	Hex	oz
23 1/8 1/8	1/8	.826 (21)	1.653 (42)	.472 (12)	
23 1/4 1/4	1/4	1.023 (26)	2.047 (52)	.511 (13)	
23 3/8 3/8	3/8	1.181 (30)	2.362 (60)	.669 (17)	
23 1/2 1/2	1/2	1.338 (34)	2.677 (68)	.826 (21)	

PA 034

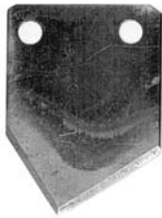
Hose Cutter



Type	Tube od	L ₁	oz
12	from 1/8 to 1/2	5.120 (130)	3.63 (12)
25	from 1/2 to 1	7.283 (185)	10.17 (13)

PA 037

Spare Blades



Type	Tube od
12	from 1/8 to 1/2
25	from 1/2 to 1

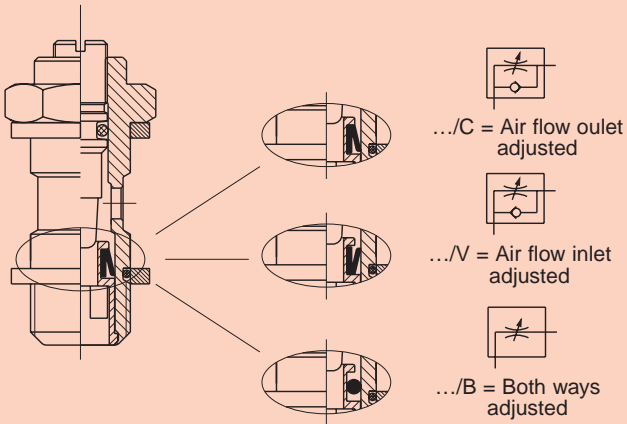
NOTE

THE PV LINE

PV Line components can **adjust, check, exhaust** and **change** flow direction in an installation. We always recommend using them with filtered and oiled air to ensure maximum life.

FLOW CONTROLS

Flow controls can adjust the air flow in a pneumatic circuit. Depending on the flow control used, the setting can be made both ways (Bidirectional Flow Control), or just one way (Unidirectional Flow Control). The Unidirectional Flow Control is used to adjust the speed of pneumatic cylinders (i.e. our C type if assembled directly on the cylinder port, and our V type if assembled in the valve port).



DATA SHEET

Working Pressure:
from 0 up to 145 p.s.i.

Nominal Pressure: 87 p.s.i.

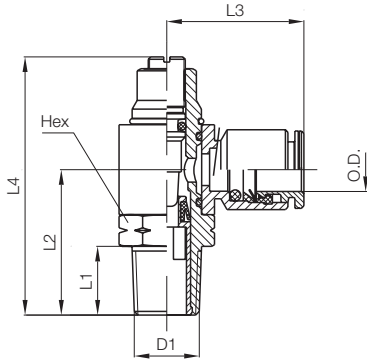
Working Temperature:
from 32 °F up to 158 °F

Recommended tubing: according to the fitting connected to the flow control.

Application Field: Pneumatic installation fed with filtered, lubricated air.

PV 18

Flow control with swivel push-in fitting



Type	Tube OD	D1 UNF	L1	L2	L3	L4	Hex	oz
18 5/32 10-32	5/32	10-32	.196 (5)	.590 (15)	.708 (18)	1.259 (32)	3/8 (9.52)	
NPTF								
18 5/32 1/8	5/32	1/8	.334 (8.5)	.866 (22)	.787 (20)	1.692 (43)	9/16 (14.28)	
18 1/4 1/8	1/4	1/8	.334 (8.5)	.866 (22)	.866 (22)	1.692 (43)	9/16 (14.28)	
18 1/4 1/4	1/4	1/4	.511 (13)	1.063 (27)	.944 (24)	2.007 (51)	11/16 (17.46)	
18 5/16 1/8	5/16	1/8	.334 (8.5)	.866 (22)	.905 (23)	1.692 (43)	9/16 (14.28)	
18 5/16 1/4	5/16	1/4	.511 (13)	1.063 (27)	.944 (24)	2.007 (51)	11/16 (17.46)	
18 3/8 1/4	3/8	1/4	.511 (13)	1.063 (27)	1.023 (26)	2.007 (51)	11/16 (17.46)	

Available as:



.../C = Air flow outlet adjusted



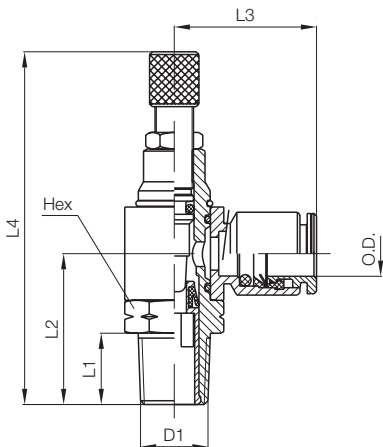
.../V = Air flow inlet adjusted



.../B = Both ways adjusted

PV 41

Flow control with swivel push-in fitting and handwheel adjustment



Type	Tube OD	D1 UNF	L1	L2	L3	L4	Hex	oz
41 5/32 10-32	5/32	10-32	.196 (5)	.590 (15)	.708 (18)	1.692 (43)	3/8 (9.52)	
NPTF								
41 5/32 1/8	5/32	1/8	.334 (8.5)	.866 (22)	.787 (20)	2.126 (54)	9/16 (14.28)	
41 1/4 1/8	1/4	1/8	.334 (8.5)	.866 (22)	.866 (22)	2.126 (54)	9/16 (14.28)	
41 1/4 1/4	1/4	1/4	.511 (13)	1.063 (27)	.944 (24)	2.519 (64)	11/16 (17.46)	
41 5/16 1/8	5/16	1/8	.334 (8.5)	.866 (22)	.905 (23)	2.126 (54)	9/16 (14.28)	
41 5/16 1/4	5/16	1/4	.511 (13)	1.063 (27)	.944 (24)	2.519 (64)	11/16 (17.46)	
41 3/8 1/4	3/8	1/4	.511 (13)	1.063 (27)	1.023 (26)	2.519 (64)	11/16 (17.46)	

Available as:



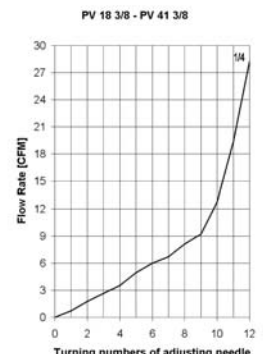
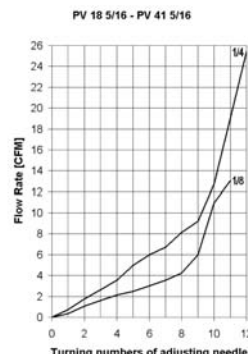
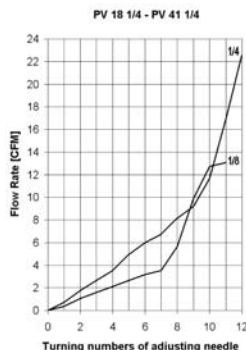
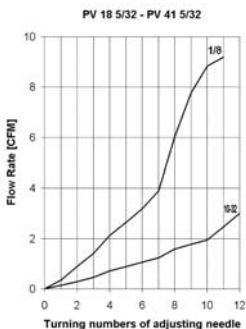
.../C = Air flow outlet adjusted




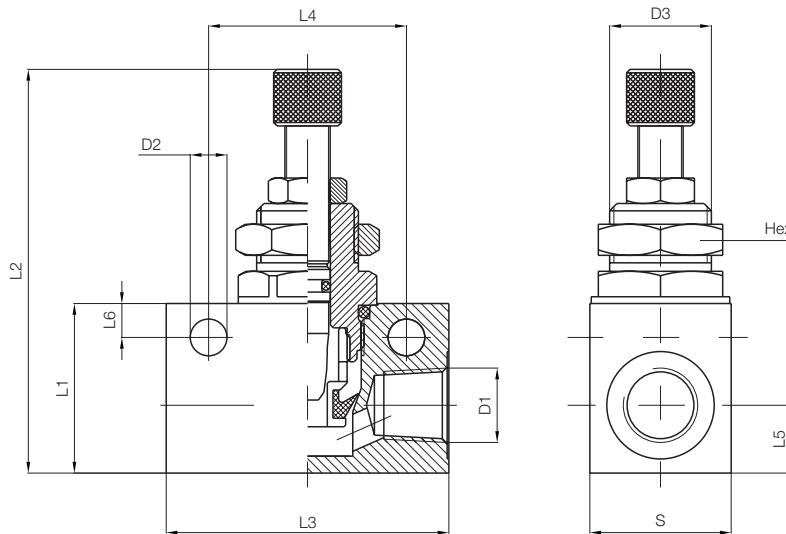
.../V = Air flow inlet adjusted



.../B = Both ways adjusted



Type	D ₁ NPTF	D ₂	D ₃	L ₁	L ₂	L ₃	L ₄	L ₅	S	Hex	oz 
21 00 18	1/8	.177 (4,5)	.472 (12)	.826 (21)	2.204 (56)	1.338 (34)	.944 (24)	.315 (8)	.629 (16)	.590 (15)	
21 00 14	1/4	.255 (6,5)	.708 (18)	1.181 (30)	2.952 (75)	1.968 (50)	1.378 (35)	.472 (12)	.984 (25)	.866 (22)	
21 00 38	3/8	.255 (6,5)	.708 (18)	1.181 (30)	2.952 (75)	2.283 (58)	1.578 (40)	.472 (12)	.984 (25)	.866 (22)	
21 00 12	1/2	.255 (6,5)	.866 (22)	1.574 (40)	3.622 (92)	2.559 (65)	1.968 (50)	.669 (17)	1.181 (30)	1.023 (26)	



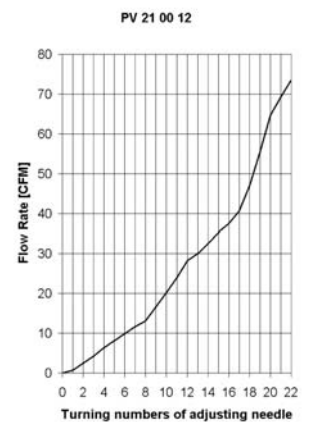
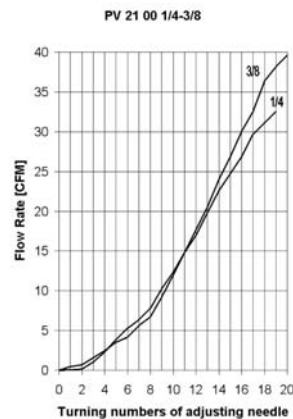
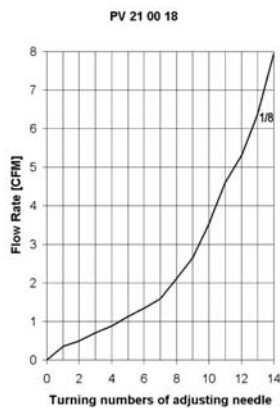
Available as:



.../U = One Way

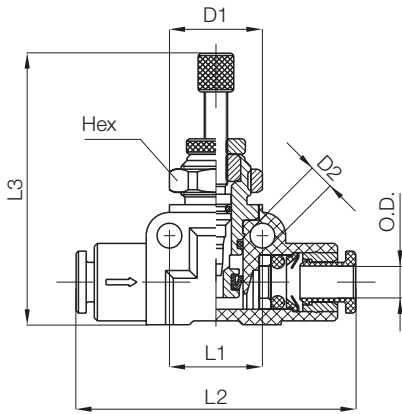


.../B = Both ways adjusted



PV 34

Acetal Flow Control

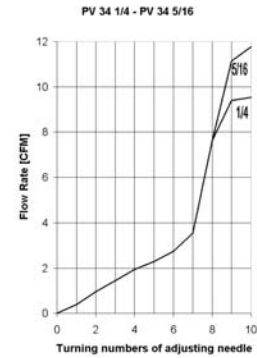
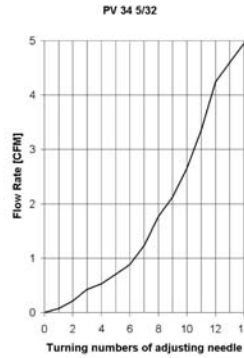


.../U = One Way

.../B = Both ways adjusted

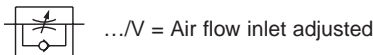
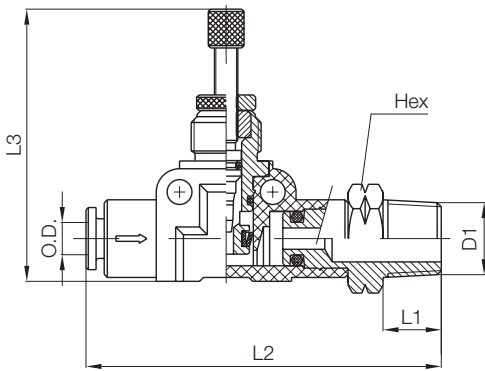
Available as:

Type	Tube OD	L1	L2	L3	D1	D2	Hex	oz
34 5/32 5/32	5/32	.472 (12)	1.417 (36)	1.181 (30)	.354 (9)	.126 (3,2)	.433 (11)	
34 1/4 1/4	1/4	.590 (15)	1.771 (45)	1.535 (39)	.433 (11)	.126 (3,2)	.551 (14)	
34 5/16 5/16	5/16	.590 (15)	1.811 (46)	1.574 (40)	.433 (11)	.126 (3,2)	.551 (14)	

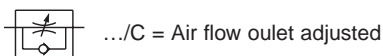
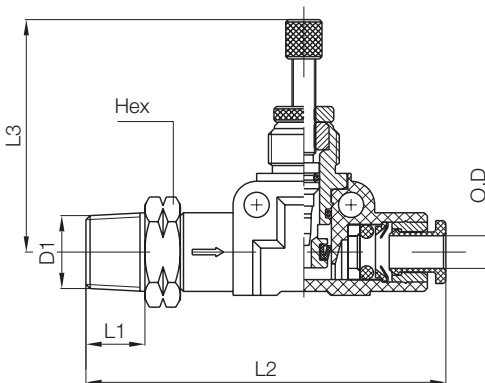


PV 35

Acetal Flow Control

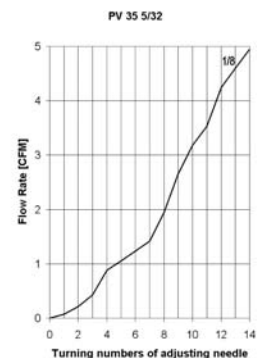
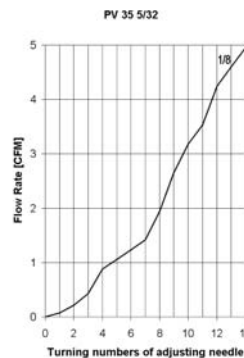


.../V = Air flow inlet adjusted



.../C = Air flow outlet adjusted

Type	Tube OD	D1 NPTF	L1	L2	L3	Hex	oz
35 5/32 1/8	5/32	1/8	.334 (8,5)	1.850 (47)	1.181 (30)	7/16 (11,11)	
35 1/4 1/8	1/4	1/8	.334 (8,5)	2.204 (56)	1.535 (39)	1/2 (12,7)	
35 1/4 1/4	1/4	1/4	.511 (13)	2.401 (61)	1.535 (39)	9/16 (14,28)	
35 5/16 1/8	5/16	1/8	.334 (8,5)	2.244 (57)	1.574 (40)	9/16 (14,28)	
35 5/16 1/4	5/16	1/4	.511 (13)	2.440 (62)	1.574 (40)	9/16 (14,28)	



NON RETURN VALVE

The flow is allowed only in one direction (the arrow direction engraved on the body) and checked in the reverse way.

DATA SHEET

Working Pressure: from 29 p.s.i. up to 145 p.s.i.

Opening Pressure: 2.9 p.s.i.

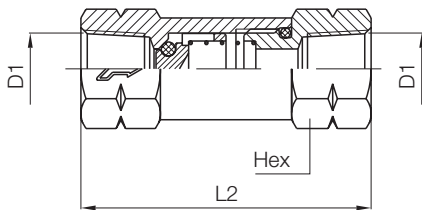
Working Temperature: from 14 °F up to 158 °F

Recommended Tubing: according to the fitting connected to the valve.

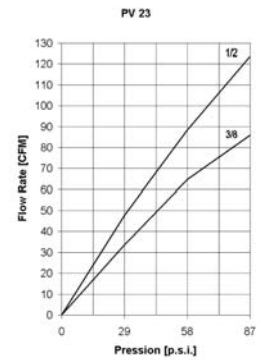
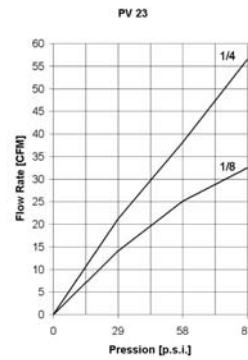
Application Field: Pneumatic Installation fed with filtered, lubricated air.

PV 23

Non-return valve



Type	D ₁ NPTF	L ₁	Hex	oz
23 00 18	1/8	1.496 (38)	.511 (13)	
23 00 14	1/4	1.653 (42)	.629 (16)	
23 00 38	3/8	2.047 (52)	.787 (20)	
23 00 12	1/2	2.440 (62)	.944 (24)	



SLIDE VALVE

The valve is used to section a pneumatic installation. Sliding the ring nut on the rod, both ON and OFF positions can be achieved. When the ring nut is against the rod hexagon, the flow goes in the arrow direction (ON); pushing it back the air supply is cut off and the installation flow is exhausted (OFF).

DATA SHEET

Working Pressure: from 0 p.s.i. up to 145 p.s.i.

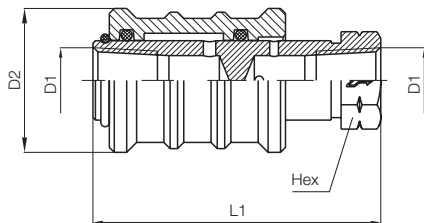
Working Temperature: from 32 °F up to 158 °F

Recommended hoses: according to the fitting connected to the valve.

Application Field: Pneumatic installation fed with filtered, lubricated air.

PV 26

Slide valve



Type	D ₁ NPTF	D ₂	L ₁	Hex	oz
26 1/8 1/8	1/8	.984 (25)	1.889 (48)	.551 (14)	
26 1/4 1/4	1/4	1.181 (30)	2.283 (58)	.669 (17)	
26 3/8 3/8	3/8	1.378 (35)	2.677 (68)	.866 (22)	
26 1/2 1/2	1/2	1.574 (40)	3.149 (80)	1.063 (27)	

USEFUL ADVICE FOR ORDERING

With a view to improving our quality and services offered, we wish to handle the incoming orders in the best possible way. In order to assist us, we would ask all our valued customers to follow the procedures laid out below, when preparing and passing orders to us.

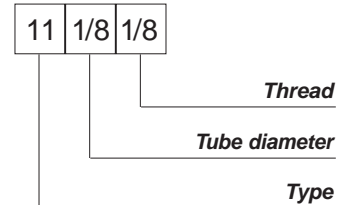
All orders should therefore be in writing, by mail, e-mail or by fax. In urgent cases only, verbal orders can be taken, providing they are confirmed by fax. They should state correct reference numbers, the exact quantity required and the diameter sizes. The min. order quantity can not be smaller than the min. unit per bag.

When specials are ordered, we suggest that You send us a copy of a drawing or a sketch, stating the special requirement. Should C.Matic ever consider it necessary, we reserve the right to amend without notice any size or technical information, contained in this catalogue. Our technical department and technicians will be very happy to answer any question You may have.

ORDER EXAMPLE

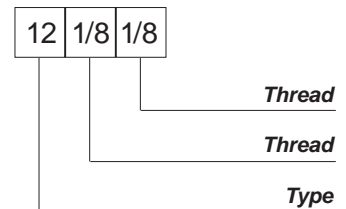
PN

Line



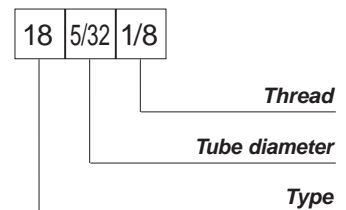
PA

Line



PV

Line



GENERAL SALES CONDITIONS

The following sales conditions shall apply unless the customer has a special written agreement:

VALIDITY OF ORDERS: All orders received by fax or e-mail are considered valid to all intents and purposes. The orders are immediately handled by our stock controller. Any cancellation of an order should be made in writing and no later than 4 days from order transmission.

DELIVERY TIME: The delivery time stated on our order acknowledgment, is not to be considered as binding. Any delivery delay which is not of our fault, can not be used as a reason to delay payment, cancel orders, claim for damages. A new acknowledgement will be raised for any delivery time change.

PACKAGING: Our components are packed in cardboard boxes, suitable for transit, and free of cost. No other alternative packaging system is available. Special packaging requests must be agreed with C.Matic initially.

CONSIGNMENT: **The customer is responsible for goods in transit and he shall have to insure the goods for transport!**

CLAIMS: Any complaint must be raised in writing within 8 days of the goods receipt. On receipt of the complaint, C.Matic reserve the right to request samples for evaluation. Equally the right is reserved

to re-import the damaged lot or arrange immediate replacement free of cost. C.Matic will refuse any complaint of defective goods that have been subject to misuse or that have been tampered with.

DESPATCH EXACTNESS: C.Matic are responsible for any mistake in interpretation of orders and packaging. They will undertake to correct parts as soon as possible. C.Matic are not supposed to accept back components ordered by mistake by the customers and only **when agreed, credit will be raised to correspond to 60% off the price paid by the customer.**

PRICES: Our price list in Italian currency and Euro is understood to be gross and ex-works. The price list remains valid until further notice.

PAYMENTS: All amounts owed should be settled on the invoice expiration day stated. If no payment is received by the invoice expiration date, interest charges are automatically applied. The interest rate is calculated based on the Banca d'Italia interest rate, valid at the time, and increased by 3%. Charges are raised by debit note. C.Matic reserve the right to stop any order or consignment if the clauses here of are disregarded! These conditions are to be understood valid to all intents and purposes, if no request for special agreements is asked for.

ELEKTRO-AUTOMATIC

05-820 PIASTÓW k/W-wy

ul. Elizy Orzeszkowej 64

tel./fax (022) **723-15-43**; tel.(022) 753-94-79

tel. GSM 0-693-666-555

<http://www.elektro-automatic.com.pl>

e-mail: biuro@elektro-automatic.com.pl



<http://www.cmatic.it>
e-mail: cmatic@cmatic.it